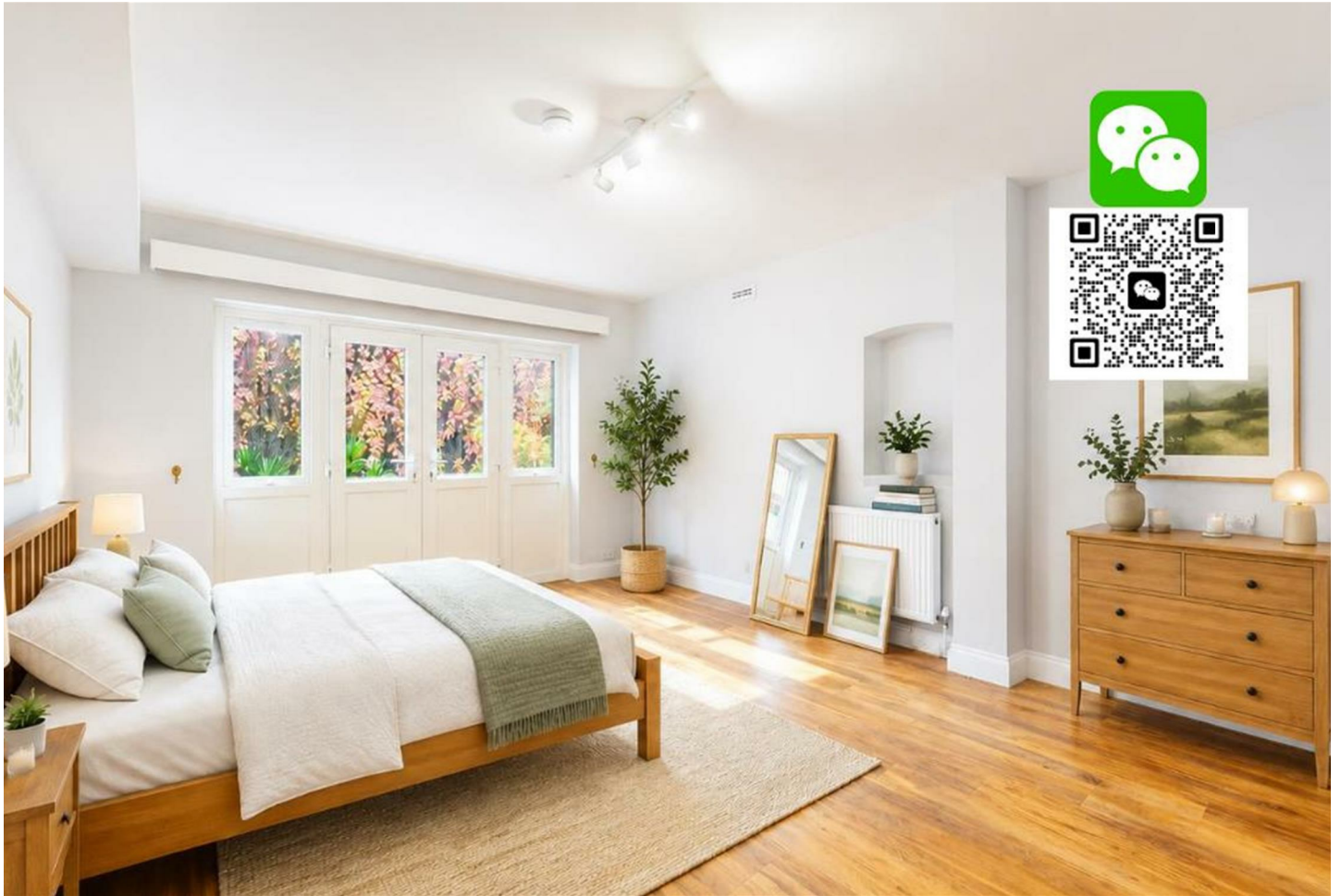


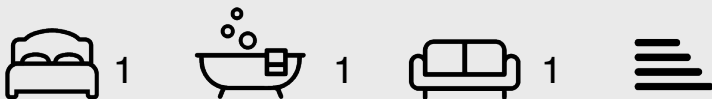
# pomp

properties



## Lexham Gardens, Kensington

£2,500 Per Week



\*BILLS INCLUDED\* Discover a delightful one-bedroom ground floor apartment nestled in a beautiful Victorian building in the heart of Kensington, London W8. With its lofty ceilings, modern conveniences, large mezzanine space and ample storage, this home is a true gem. Inside, you'll find a cozy bedroom, a contemporary bathroom, and an open-plan kitchen/living area with a convenient washing machine. All bills are covered except for electricity. Furnishing options available on request.

Situated in the prestigious W8 postcode, this property enjoys an exceptional location. Kensington offers upscale shopping, dining, and cultural attractions at your doorstep. Explore the rich history with a visit to Kensington Palace or enjoy leisurely strolls through picturesque Kensington Gardens. With easy access to public transport via Earls Court and High Street Kensington tube stations, you're perfectly positioned to access all of London's wonders.

- New One bedroom Victorian flat
- High ceilings, natural light, and ample storage
- Modern kitchen, cozy fireplace, and a washing machine
- All-inclusive except for electricity
- Prestigious location with upscale amenities
- Convenient access to public transport

